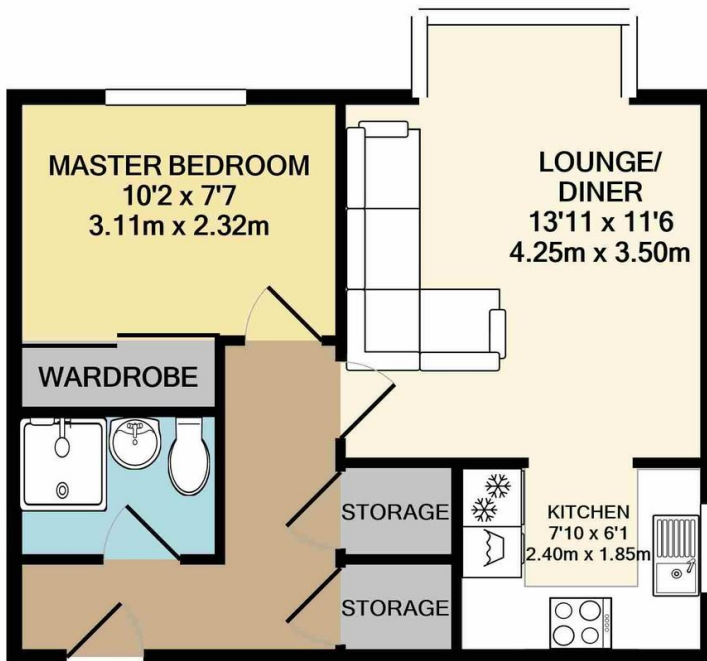




Conifer Way
, Wembley, , HA0 3QR

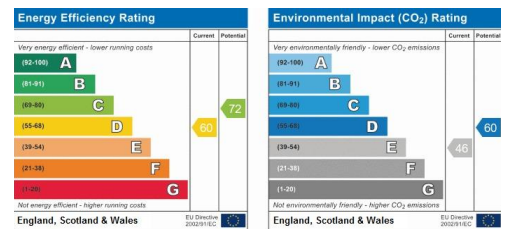
£1,200 pcm

Property Summary



TOTAL APPROX. FLOOR AREA 396 SQ.FT. (36.8 SQ.M.)

Whilst every attempt has been made to ensure the accuracy of the floor plan contained here, measurements of doors, windows, rooms and any other items are approximate and no responsibility is taken for any error, omission, or mis-statement. This plan is for illustrative purposes only and should be used as such by any prospective purchaser. The services, systems and appliances shown have not been tested and no guarantee



- Ground floor flat
- One bedroom
- Recently refurbished
- Fitted kitchen
- Family bathroom
- Master room with fitted wardrobes
- Electrical heating
- Parking
- Near North Wembley
- Available immediately

38 Court Parade
Wembley
Middlesex
HA0 3HS

www.propertyhubltd.com
info@propertyhubltd.com
0208 903 1002

Agents Note: Whilst every care has been taken to prepare these particulars, they are for guidance purposes only. All measurements are approximate and for general guidance purposes only and whilst every care has been taken to ensure their accuracy, they should not be relied upon and potential buyers/tenants are advised to recheck the measurements